

# Keeping the FOCUS

Vision

Vs

Reality

# Staying on the Path

- Be Clear with intent or Goal
- Never, Never Assume what you wanted to happen is happening. Feedback Loop
- Connect decisions to EBP and outcomes
- Data is simple, transparent and timely
- Make it personal and positive
- Provide peer coaching and practice
- Take something off the plate

# Assumptions

Do you know what you think you know is really happening??

# Tracking Sanctions

## SANTIONS FROM NOVEMBER 2007 - APRIL 2008 BY TYPE AND LOCATION

	ACS	DRC	EM	JAIL SANC	REC JAIL DAYS	JAIL DAYS/SANC	REVO SANC	REC DAYS	TOTAL JAIL DAYS
<b>OVERAL</b>									
<b>L</b>	<b>154</b>	<b>527</b>	<b>39</b>	<b>1,790</b>	<b>33,477</b>	<b>19</b>	<b>365</b>	<b>27,368</b>	<b>60,845</b>
MTAP	0	0	0	33	584	18	8	840	1,424
MTCB	9	2	0	82	460	6	3	240	700
MTCE	7	44	8	170	3198	19	36	2490	5,688
MTDC	0	7	0	24	312	13	3	420	732
MTDV	8	47	2	130	2318	18	20	1455	3,773
MTDX	2	2	0	6	73	12	3	255	328
MTDZ	3	19	1	172	3159	18	7	540	3,699
MTEA	19	54	0	201	3516	17	32	2340	5,856
MTFS	7	20	1	44	1034	24	1	75	1,109
MTGN	14	35	6	86	1961	23	45	3597	5,558
MTGR	8	40	2	124	2588	21	22	1740	4,328
MTLC	0	2	0	5	98	20	0	0	98
MTMX	1	5	0	63	1419	23	25	2700	4,119
MTNO	16	67	12	195	3733	19	21	1186	4,919
MTST	0	6	0	41	909	22	37	3255	4,164
MTSW	10	87	0	204	3569	17	28	1845	5,414
MTSX	50	90	7	210	4546	22	74	4390	8,936
<i>total</i>	154	527	39	1790	33477	19	365	27368	60,845

**AVERAGE JAIL BED DAYS  
SANCTIONED BY OFFICE OVER TIME**

Over  
DCJ  
Average

	19 baseline	14 May-08	17 Jun-08	15 Jul-08	15 Aug-08	19 Sep-08	17 Oct-08	17 Nov-08	16 Dec-08
MTAP	18	25	24	29	10	25	46	25	52
MTCB	6	6	4	4	8	4	4	4	9
MTCE	19	12	15	15	10	17	18	21	17
MTDC	13	7	13	30	4	27	3	7	6
MTDV	18	11	15	12	13	13	21	19	21
MTDZ	18	13	15	12	13	20	19	13	11
MTEA	17	13	21	15	13	15	13	16	13
MTFS	24	6	18	10	15	6	16	15	8
MTGN	23	19	25	15	18	26	23	21	28
MTGR	21	16	23	16	18	21	16	17	16
MTMX	23	26	21	18	18	18	15	13	20
MTNO	19	12	11	14	12	13	13	19	12
MTST	22	17	27	22	13	22	28	20	26
MTSW	17	10	9	10	13	17	16	15	11
MTSX	22	20	22	20	25	24	22	22	18

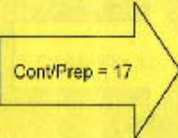
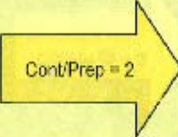
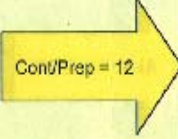
# EBP

How does the data relate to the decisions, resources?

Preliminary analysis of 263 LSCMI completed: Cross tab of risk level (OCMS) and Need (LSCMI)  
 Stage of Offender Change within Six Groupings

Need Level for A/D, Employment, Education for Contemplative and Preparation Stage Offenders within Six Groupings

RISK/NEED INTERSECTION	STAGES OF CHANGE**		A/D NEED	ED/EMPLOY NEED	NUMBER IN CURRENT CASELOAD
LSCMI: very high OCMS: high N=35 (13%)	Pre-cont = 8 Cont = 15 Prep = 4 Act/Main = 1 Missing = 7	Cont/Prep = 19	Very High = 8 High = 10 Other = 1	Very High = 7 High = 8 Other = 4	482
LSCMI: very high OCMS: medium N=10 (4%)	Pre-cont = 2 Cont = 2 Prep = 1 Act/Main = 3 Missing = 8	Cont/Prep = 3	Very High = 3 High = 0 Other = 0	Very High = 0 High = 2 Other = 1	148
LSCMI: high OCMS: high N=55 (21%)	Pre-cont = 10 Cont = 16 Prep = 11 Act/Main = 11 Missing = 7	Cont/Prep = 27	Very High = 3 High = 14 Other = 10	Very High = 6 High = 10 Other = 11	778

<b>LSCMI: high</b> <b>OCMS: medium</b> <b>N=39 (15%)</b>	Pre-cont = 4 Cont = 8 Prep = 9 Act/Main = 10 Missing = 8	 Cont/Prep = 17	Very High = 6 High = 6 Other = 5	Very High = 3 High = 5 Other = 9	558
<b>LSCMI: medium</b> <b>OCMS: high</b> <b>N=18 (7%)</b>	Pre-cont = 2 Cont = 1 Prep = 1 Act/Main = 9 Missing = 5	 Cont/Prep = 2	Very High = 0 High = 1 Other = 1	Very High = 0 High = 0 Other = 2	260
<b>LSCMI: medium</b> <b>OCMS: medium</b> <b>N=32 (12%)</b>	Pre-cont = 5 Cont = 5 Prep = 7 Act/Main = 8 Missing = 7	 Cont/Prep = 12	Very High = 0 High = 4 Other = 8	Very High = 0 High = 3 Other = 9	445

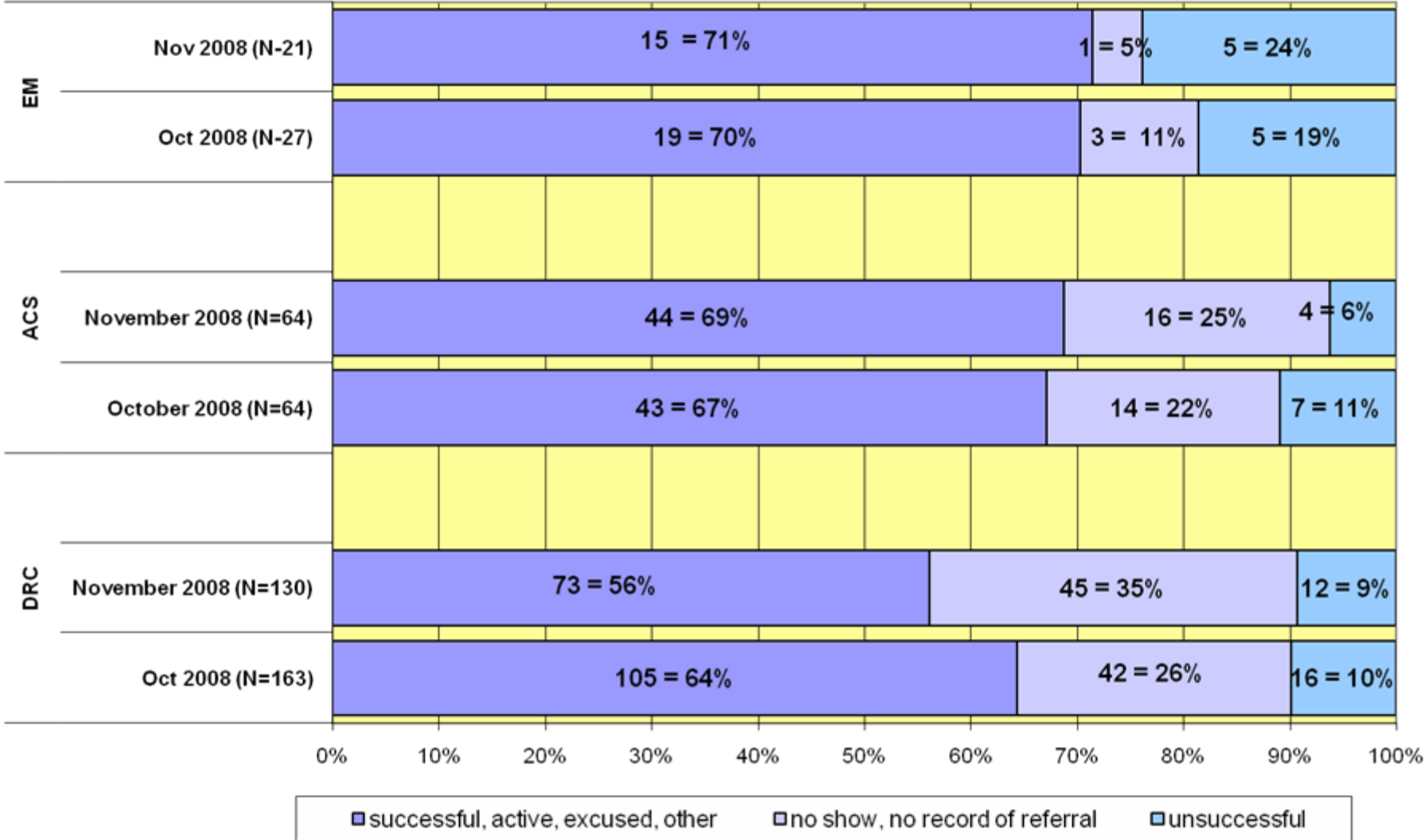
\*\*Overall:

Pre-contemplative = 31  
 Contemplative = 47  
 Preparation = 33  
 Action/Maintenance = 42  
 Missing = 36

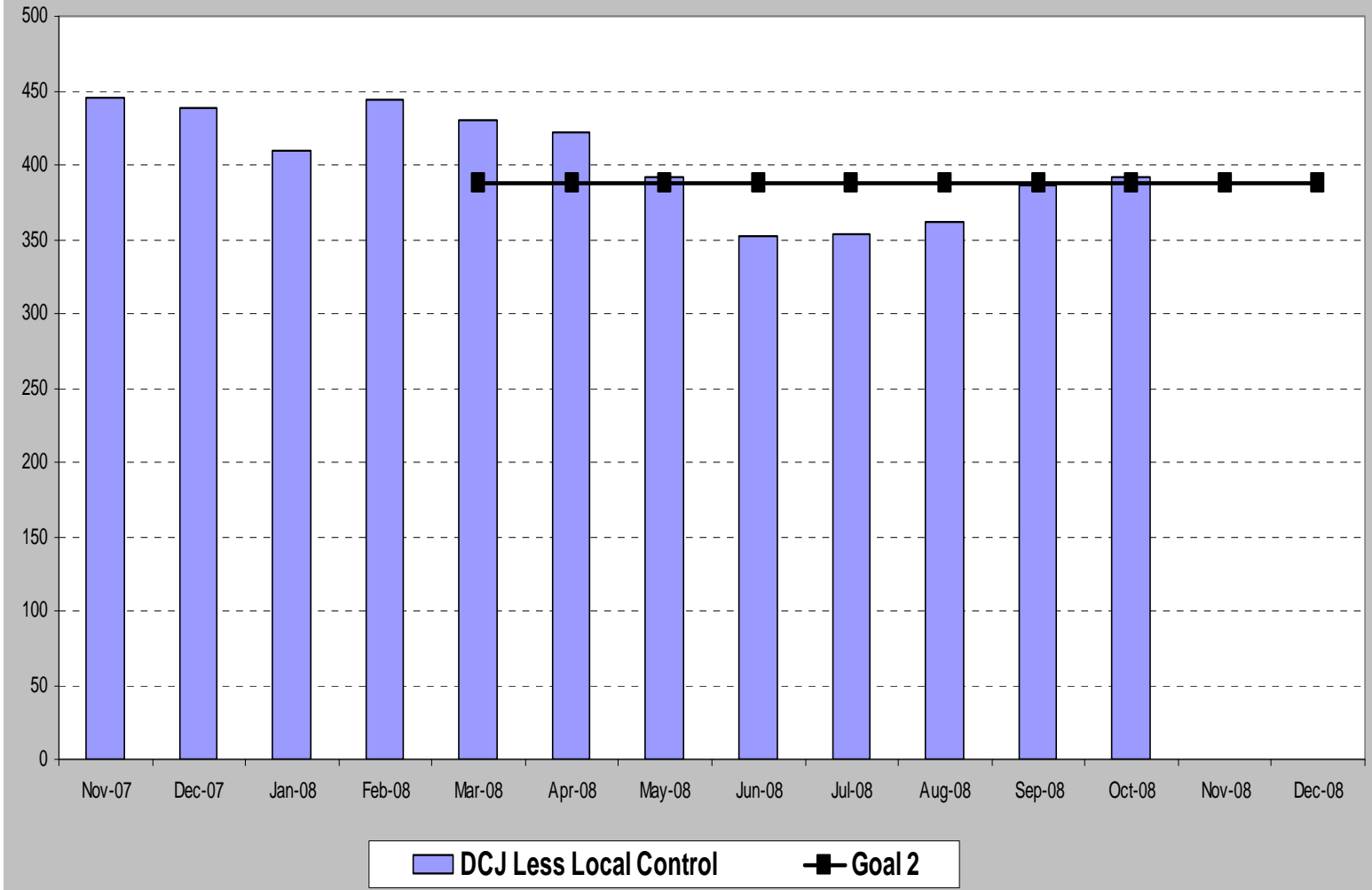
Simple to understand

Does it show movement

**REFERRALS AND OUTCOMES TO ALTERNATIVE  
SANCTIONS: OCT/NOV 2008**



Total DCJ Jail Population excluding Local Control



# Make it Personal

How do we/you compare

OREGON DEPARTMENT OF CORRECTIONS Community Corrections Outcome Measures HIGH and MEDIUM Caseload Only								
	On		Closures to				Admissions 2005/1ST Half	
	EMPLOYMENT	TREATMENT	RESTITUTION	COMMUNITY SERVICE	POSITIVE CASE CLOSURES		RECIDIVISM	
					Post-Prison	Probation	Post-Prison	Probation
Location	Hi-Med	Hi-Med	Hi-Med	Hi-Med	Hi-Med	Hi-Med	Hi-Med	Hi-Med
Statewide	42%	34%	23%	45%	67%	43%	41.7%	40.9%
<a href="#">BAKER</a>	46%	53%	0%	0%	50%	60%	60.0%	30.0%
<a href="#">BENTON</a>	51%	37%	62%	80%	78%	75%	40.0%	36.8%
<a href="#">CLACKAMAS</a>	50%	34%	46%	75%	69%	41%	44.3%	41.4%
<a href="#">CLATSOP</a>	48%	33%	25%	58%	75%	64%	44.4%	40.0%
<a href="#">COLUMBIA</a>	41%	28%	50%	0%	85%	22%	52.0%	20.0%
<a href="#">COOS</a>	44%	24%	31%	98%	66%	52%	52.4%	51.4%
<a href="#">CROOK</a>	51%	23%	0%	0%	67%	25%	50.0%	26.7%
<a href="#">CURRY</a>	35%	31%	50%	0%	89%	38%	100.0%	37.5%
<a href="#">DESCHUTES</a>	52%	41%	5%	11%	62%	56%	53.6%	54.3%
<a href="#">DOUGLAS</a>	42%	28%	22%	47%	81%	49%	39.2%	45.6%
<a href="#">GILL/SHER/WHEE</a>	50%	0%	0%	100%	100%	100%	0.0%	25.0%
<a href="#">GRANT</a>	56%	89%	0%	0%	67%	100%	0.0%	66.7%
<a href="#">HARNEY</a>	39%	19%	0%	0%	57%	100%	50.0%	0.0%
<a href="#">HOOD RIVER</a>	45%	36%	100%	56%	100%	80%	42.9%	26.7%
<a href="#">JACKSON</a>	38%	38%	12%	70%	80%	56%	64.1%	43.1%
<a href="#">JEFFERSON</a>	30%	52%	37%	96%	67%	60%	38.9%	35.7%

**OREGON DEPARTMENT OF CORRECTIONS  
 RESTITUTION Outcome Measure for MTCB  
 during to**

RESTITUTION				
MEASURES				
Location	Total	Hi-Med	Aging	Errors
Baseline	35%	0	N/A	0
Statewide	36%	23%	N/A	3%
MTCB	<a href="#">51%</a>	<a href="#">0%</a>	N/A	0%
3207-DEBORAH	<a href="#">56%</a>	0%	N/A	0%
3208- JEFFREYS	<a href="#">53%</a>	0%	N/A	1%
3209-CAROL HOVDEY	<a href="#">45%</a>	<a href="#">0%</a>	N/A	0%
3210-EVONNE CONNERS	<a href="#">55%</a>	0%	N/A	0%
3211-LYNDA HUTCHINGS	<a href="#">41%</a>	0%	N/A	0%

OREGON DEPARTMENT OF CORRECTIONS Community Corrections Outcome Measures Cohort 2005/1ST - Released (/Parole) or Admitted (Probation) - 06/30/2005								
RECIDIVISM								
/PAROLE							PROBATION	
LOCATION	Only		LC Only		Combined		Percent	Pool
	Percent	Pool	Percent	Pool	Percent	Pool		
Baseline	30.0%	0	30.0%	0	30.0%	0	23.0%	0
Statewide	24.0%	1,554	38.0%	1,313	30.4%	2,867	27.0%	4,981
<a href="#">UNKNOWN</a>	0.0%	2	0.0%	1	0.0%	3	0.0%	5
<a href="#">BAKER</a>	<a href="#">36.4%</a>	11	<a href="#">40.0%</a>	5	<a href="#">37.5%</a>	16	<a href="#">21.1%</a>	19
<a href="#">BENTON</a>	<a href="#">31.6%</a>	19	<a href="#">21.1%</a>	19	<a href="#">26.3%</a>	38	<a href="#">27.7%</a>	47
<a href="#">CLACKAMAS</a>	<a href="#">20.0%</a>	90	<a href="#">38.2%</a>	55	<a href="#">26.9%</a>	145	<a href="#">27.7%</a>	376
<a href="#">CLATSOP</a>	<a href="#">20.8%</a>	24	<a href="#">33.3%</a>	24	<a href="#">27.1%</a>	48	<a href="#">24.6%</a>	69
<a href="#">COLUMBIA</a>	<a href="#">38.5%</a>	13	<a href="#">40.0%</a>	25	<a href="#">39.5%</a>	38	<a href="#">16.4%</a>	67
<a href="#">COOS</a>	<a href="#">28.0%</a>	25	<a href="#">46.7%</a>	15	<a href="#">35.0%</a>	40	<a href="#">29.4%</a>	102
<a href="#">CROOK</a>	<a href="#">12.5%</a>	8	<a href="#">42.9%</a>	14	<a href="#">31.8%</a>	22	<a href="#">22.9%</a>	35
<a href="#">CURRY</a>	<a href="#">33.3%</a>	3	0.0%	2	<a href="#">20.0%</a>	5	<a href="#">18.2%</a>	33
<a href="#">DESCHUTES</a>	<a href="#">42.3%</a>	52	<a href="#">47.8%</a>	67	<a href="#">45.4%</a>	119	<a href="#">32.4%</a>	216
<a href="#">DOUGLAS</a>	<a href="#">22.5%</a>	40	<a href="#">39.0%</a>	41	<a href="#">30.9%</a>	81	<a href="#">31.4%</a>	156
<a href="#">GILL/SHER/WHEELER</a>	0.0%	1	0.0%	2	0.0%	3	<a href="#">14.3%</a>	7
<a href="#">GRANT</a>	0.0%	1	0	0	0.0%	1	<a href="#">30.0%</a>	10
<a href="#">HARNEY</a>	<a href="#">40.0%</a>	5	0.0%	2	<a href="#">28.6%</a>	7	<a href="#">11.1%</a>	9

Are you coaching

When do we get to practice

## Master of Your Domains?

The LS-CMI instrument contains unique domains, representing the central factors in determining an offender's risk of re-offending. Research indicates that each of these domains makes a positive and distinct contribution to the offender's risk of re-offending. Each LS-CMI domain has a different number of items. The more items a domain contains, the more relative importance it has in predicting recidivism.

This section contains examples of these factors, tips for scoring these areas, and strategies for helping probationers achieve goals related to the criminogenic need domains of the LS-CMI. Each of the central predictors must be assessed and weighed in terms of its contribution to the individual's criminal propensity. One or more are likely to emerge as the key case planning focus. This is the essence of case formulation and should drive supervision and treatment strategies.

### Static Items

The scoring of these items will not change over time. Scoring an assessment using only static items will result in the same score, regardless of the offender's progress throughout supervision.

- Age
- Race / Gender
- Criminal history
- Intellectual functioning

1.2 - Education / Employment

### LS-CMI Scoring Tip - Rater Items

Rater items are LS-CMI questions that have a scoring range. The high points on the rater scale (3, 2) represent strengths or protective factors. The low points on the rater scale (1, 0) represent risk factors.

Strength		Risk	
3	-	2	-
	'No' 1		'Yes' 0

“Not a risk factor”

“This is a risk factor”

Try scoring Rater items as if they were a 'Yes' – 'No' question. Ask yourself 'Is this factor a significant risk to re-offending?' If the answer is 'yes,' score the rater item as zero (0) or one (1). If the answer is 'no,' score the rater item as a three (3) or two (2).

### Dynamic Items

Also known as **need factors**, the scoring of these items can change over time. Change can be the result of intervention, treatment, programming, or through maturation and environmental changes. Dynamic items include two types of need factors, **Criminogenic** and **Non-Criminogenic** needs.

#### Non-Criminogenic Needs

Non-Criminogenic needs do not directly relate to re-offending but could still require attention.

- Health care
- Social Welfare

#### Criminogenic Needs

Criminogenic needs contribute to re-offending.

- Attitude
- Associates
- Leisure
- Substance Abuse

1.3 - Family / Marital

1.4

### Long Term Goal

➔ To increase time outside of work.

### Strategies

- Discuss weekend activities.
- Discuss weekend or times of day possible.
- Discuss hobbies or interests.
- Work with the probationer on social clubs, sports, or other opportunities that they can participate in.
- Discuss opportunities for activities they are interested in.

### Long Term Goal

➔ To eliminate alcohol and drug use.

### Strategies

- Discuss consequences of use.
- Refer for alcohol counseling to assist in scheduling.
- Have the probationer identify high risk situations and discuss strategies with these situations.
- Discuss the benefits of aftercare, and self-help.
- Raise the probationer's awareness of the consequences of re-offending.

# Take something off the plate

- Contact Standards
- Geographic distribution
- Office Visits required